

NexusLED®  
*Simpler is Better*

A photograph of a Petron gas station at dusk. The station features a large, illuminated canopy with the word "PETRON" visible on its side. Several cars are parked at the fuel pumps, and the scene is lit by the station's lights and the ambient light of the twilight sky.

# Petron Station Lighting LED Under Canopy **CR Series**

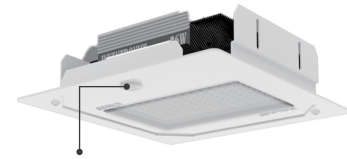
# LED Under Canopy CR500 Series (optional with sensor)



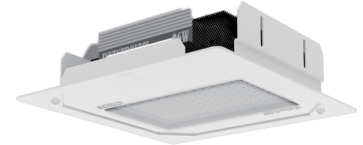
The Luxeon LEDs used in this downlight provides a reliable and high intensity light for clarity and safety at the forecourt with maximum energy savings. Further savings can be achieved with the optional motion-detection feature.

## Application areas

- Service station canopies
- Petrol Station
- Multipurpose halls
- Factories
- Workshops



Dimmable version features a motion-detection sensor for further energy savings

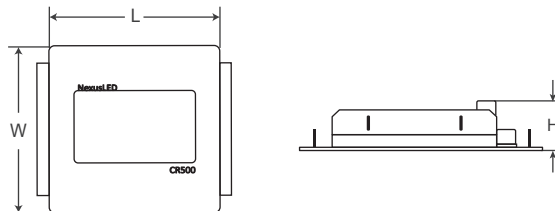


## Product Specifications

<b>AC Input:</b> 90 ~ 305Vac	<b>LED Lumen Maintenance:</b> LM80
<b>Color Rendering Index (CRI):</b> >70	<b>Electrical Safety:</b> Class I
<b>Beam Angle:</b> 120°	<b>IP Rated:</b> IP66, IK08
<b>Operating Temperature:</b> -30°C ~ +50°C	<b>Heatsink material:</b> Extruded Aluminium
<b>Storage Temperature:</b> -30°C ~ +80°C	<b>Luminaire Cover Material:</b> Clear Polycarbonate
<b>Color Temperature:</b> 3000K - 6500K	<b>Compliant:</b> SIRIM, CB, IEC, CE
<b>Lifetime (typical):</b> 50,000 hours at ta 25°C	

Model	CR500-100-C57-120 CR500-100-C57-120/S	CR500-120-C57-120 CR500-120-C57-120/S	CR500-150-C57-120 CR500-150-C57-120/S
System Power	100W ± 5W	120W ± 5W	150W ± 5W
Luminaire Efficacy	147 lm/W	135 lm/W	132 lm/W
Luminous Flut	14,255 lm	16,970 lm	20,350 lm

## Dimensions



Detail	L	W	H	Weight
Size	370mm	370mm	76mm	± 5.4kg
Cut-Out	340mm	340mm	-	-

## Photometry

