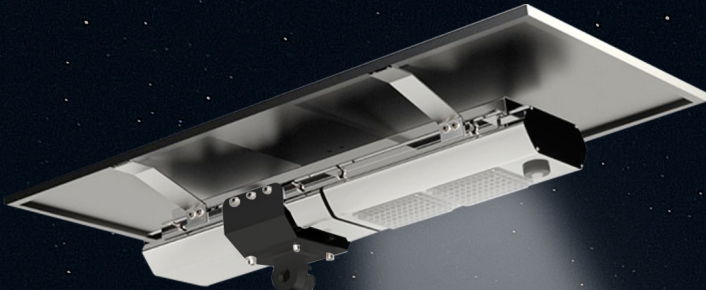


NexusLED®  
*Simple is Better*



## SOLARiS-M1 Series

RENEWABLE ENERGY SOLUTION



Modular Design  
(Easy Maintenance)



Easy Installation



PIR Sensor

# Solar LED Streetlight

## SOLARiS-M1 J Series

The Future of Street Lighting. This solar-powered street light features a modular design for easy maintenance and simple installation. The independent replacement of solar panel, light engine, and battery makes it a smart and sustainable choice.



### Application areas

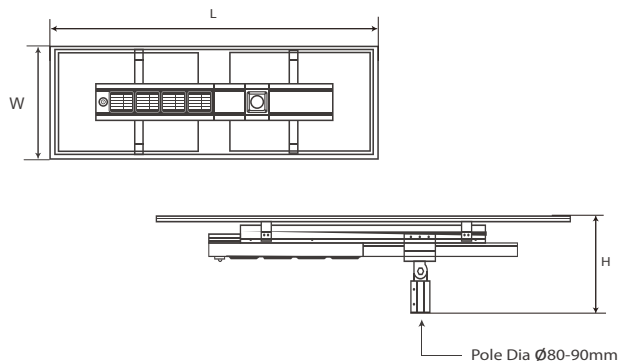
- Roadways
- Factories
- Compound Lightings
- Parks
- Petrol Station Carparks
- Communities

### Product Specifications

<b>Battery Type:</b> LiFePo4	<b>Charge/Discharge Temperature:</b> 0° ~ 60°C/-20° ~ 60°C
<b>Depth Of Discharge DOD:</b> < 80%	<b>Storage Temperature:</b> -20°C ~ +45°C
<b>Luminous Efficacy:</b> >170lm/w	<b>Charging Time:</b> 4 ~ 4.5hrs direct sunlight
<b>LuColor Rendering Index (CRI):</b> >70	<b>Autonomy Day:</b> 2 consecutive rainy days
<b>Beam Angle:</b> 45° x 155°	<b>Housing material:</b> Aluminum Extrusion with Die casting Spigot
<b>Colour Temperature:</b> 3000K - 6500K	<b>IP Rating:</b> IP66
<b>Working Mode:</b> 12hrs (4hrs - 100%, 2hrs - 60%, 6hrs - 40%)	

Model	30W-40W	50W-60W	70W-90W	100W-120W	130W-150W
Battery	12.8V, 66AH	12.8V, 90AH	25.6V, 66AH	25.6V, 90AH	25.6V, 114AH
Mono PV Module Power	120W	150W	200W	250W	300W
Luminaire Efficacy Rating (LER)	5,100lm - 6,800 lm	8,500lm - 10,200 lm	11,900lm - 15,300 lm	17,000lm - 20,400 lm	22,100lm - 25,500 lm
Recommended Pole Height	4m ~ 6m	5m ~ 8m	6m ~ 9m	7m ~ 10m	8m ~ 12m
Recommended Pole Distance	15m ~ 20m	18m ~ 23m	20m ~ 25m	23m ~ 28m	25m ~ 30m

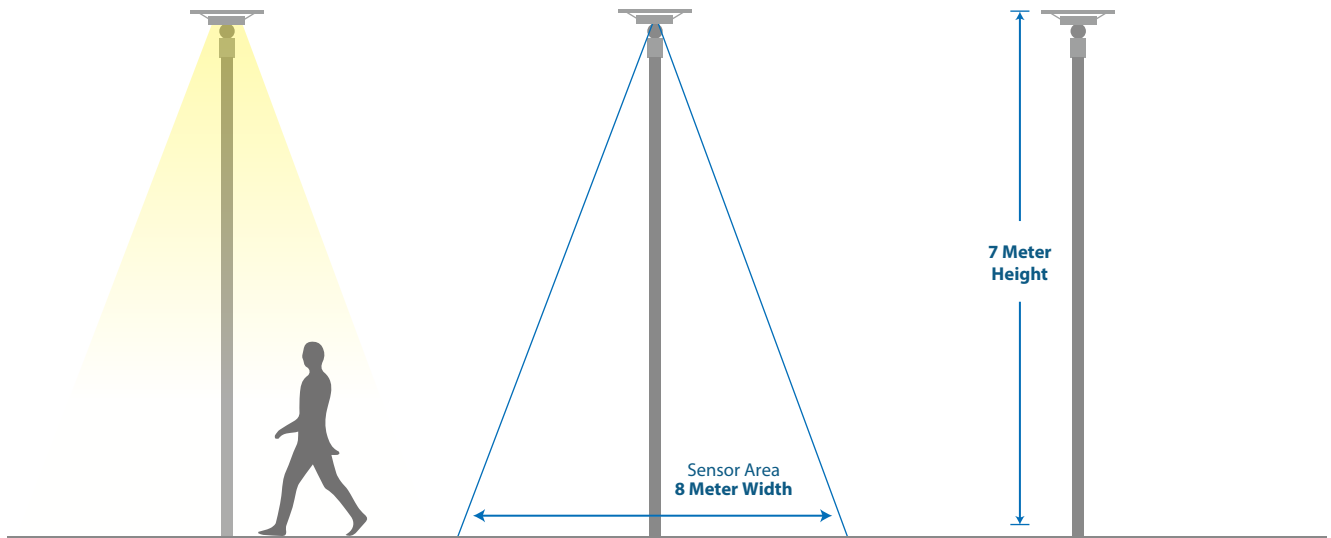
### Dimensions



Size	30-40W	50-60W	70-90W	100-120W	130-150W
L	1010mm	1190mm	1500mm	1870mm	2194mm
W	670mm				
H	360mm				
Weight	±30kg	±38kg	±46kg	±50kg	±60kg

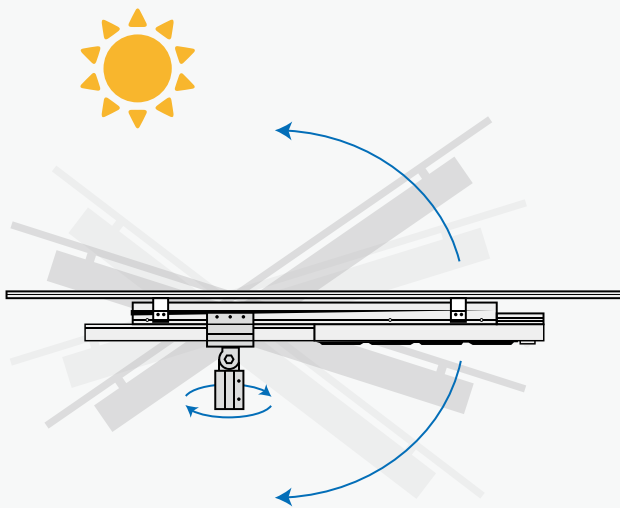
## PIR SENSOR

Adding PIR sensor to each unit makes the streetlight works intelligently. The streetlight adjusting its light intensity according to the traffics through its 15m detection range PIR sensor. By manipulating the intensity according to the traffics, it saves battery power for longer operating hours and increase the life-span of the light engine and battery



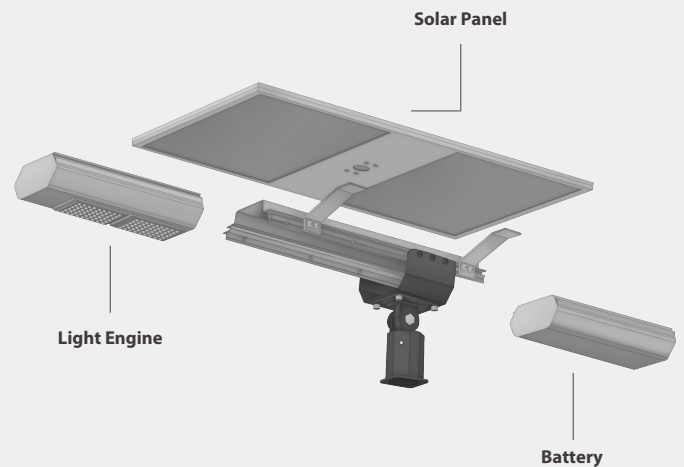
## ADJUSTABLE SPIGOT

Adjustable spigot to optimise the solar panel orientation according to the best sun direction.



## MODULAR DESIGN

Modular design with 3 main modules, solar panel, light engine and battery, which can be replaced independently



## IP65 WATERPROOF RATING

This is an all weather robust solar powered streetlight that may be used in any conditions. The IP65 waterproof rating is one of the features that allows it to function even during wet seasons without any of the components being harmed.



## Recommended Pole Height vs Pole Distance

