

## FLT-M2S



### FLT-M2S 40 Watts

(45 deg x 80 deg Beam Angle)

FLT-M2S with Osram LEDs offer optimum visual conditions while enabling maximum energy savings

### Benefits

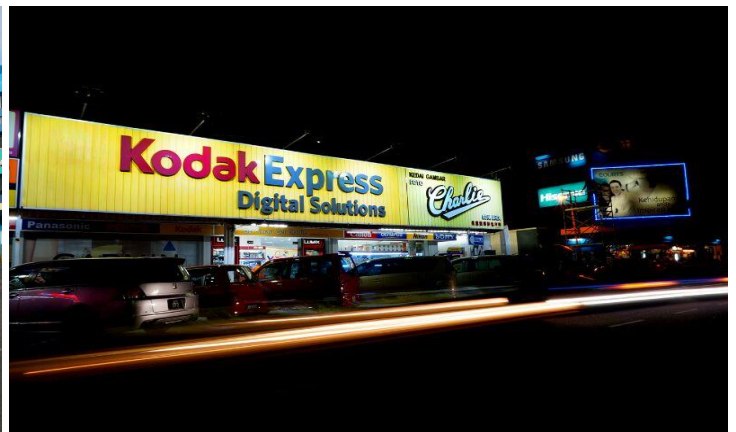
- Better visibility at night
- Easy installation
- Minimum maintenance

### Features

- With built in optics for maximum light output.
- Selectable power option
- Long useful life up to 50,000 hrs
- Various light color selection

### Application

- Building
- Compound
- Billboards
- Signage

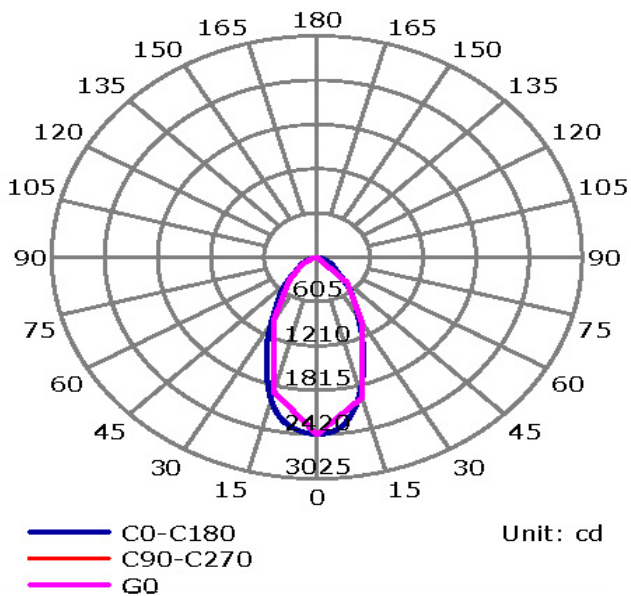


Technical Specification :

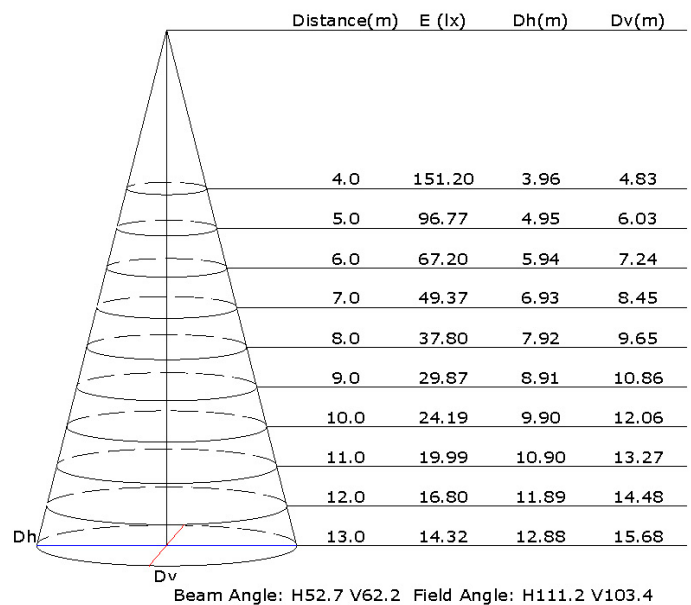
Model	FLT-M2S-40W-C4580	FLT-M2S-40W-F4580
AC Input	100 ~ 240Vac	
System Power	40W +/- 2W	
LED Driving Current	1,400 mA (700 mA each LED)	
Number of LEDs	16 pcs Osram LED	
Luminous Flux ( Hot Lumen )	2,550 lm	2,050 lm
Luminous Efficacy	68 lm/W	51 lm/W
Light Color	Cool White	Warm White
Correlated Color Temperature ( CCT )	6000K ~ 7000K	2850K ~ 3250K
Beam Angle	45 x 80°	
Operating Temperature	-30 ~ +50° C	
Storage Temperature	-30 ~ +90° C	
Lifetime (typ.)	50,000 hrs at Ta 25° C	
Heatsink Material	Aluminium Extrusion	
Luminaire Cover Material	Clear PC	
LED Lumen Maintenance	LM80	
Casing Color	Black	
Size (L) X (W) x (H)	300mm x 219mm X 85mm	
IP rating	IP66	
Electrical Safety	Class II	

Photometric data :

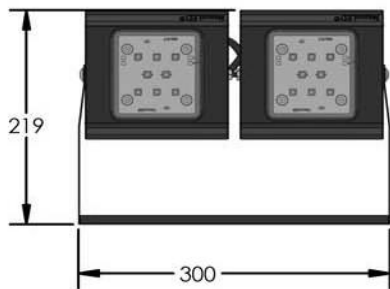
Luminous Intensity Distribution Curve



Illuminance at a Distance



Product Dimension :



Model Structure Name :

F L T - M 2 S - 4 0 W - C 4 5 8 0

Product Name :

Flood light

Product Series :

Mini 2 with lens

System Power :

( 40 - 40 Watts )

Color :

( C - Cool White ; F - Warm White )

Optic :

( 4580 - 45 x 80 degree )