

## FLT-M2S



## FLT-M2S

(20 Watts, 45 x 80 deg Beam Angle)

FLT-M2S with Osram LEDs offer optimum visual conditions while enabling maximum energy savings

## Benefits

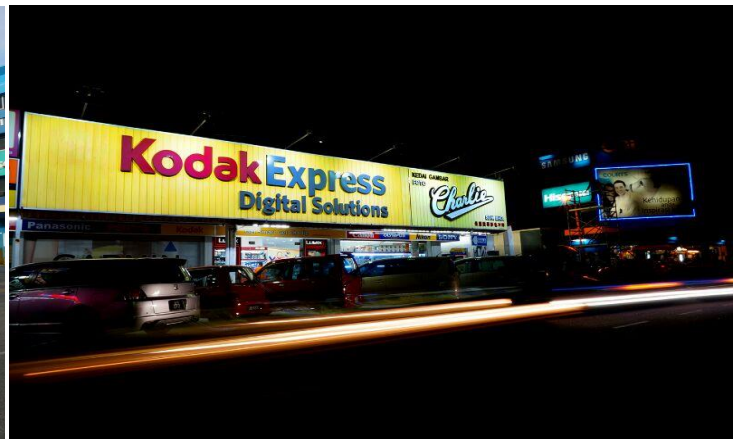
- Better visibility at night
- Easy installation
- Minimum maintenance

## Features

- With built in optics for maximum light output.
- Selectable power option
- Long useful life up to 50,000 hrs
- Various light color selection

## Application

- Building
- Compound
- Billboards
- Signage

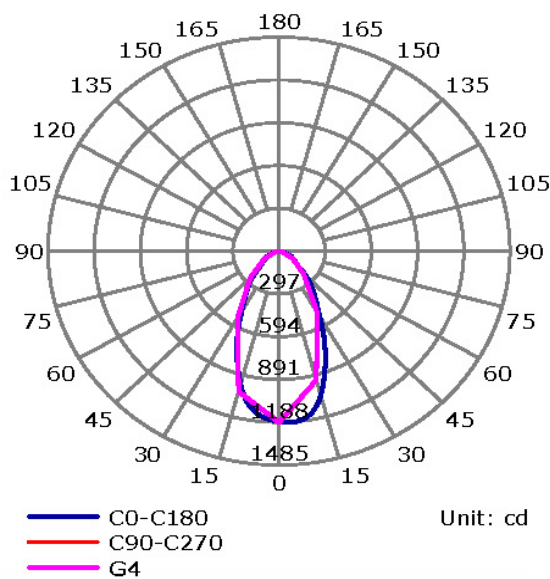


## Technical Specifications :

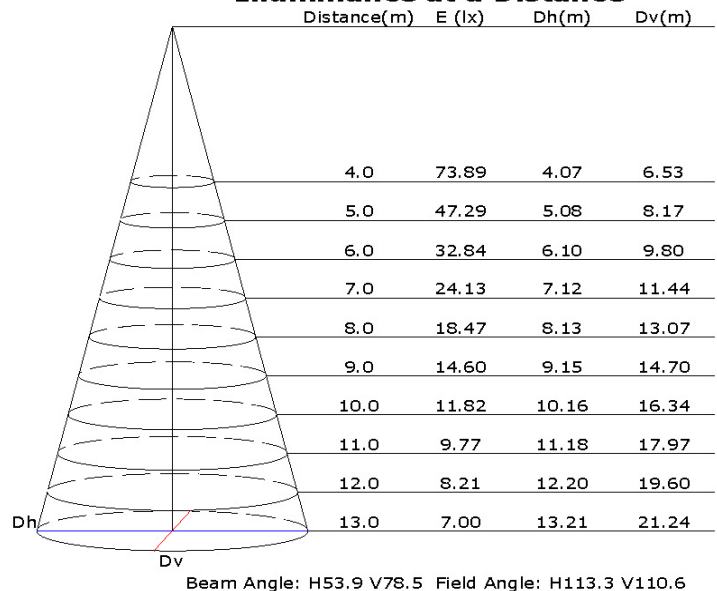
| Model                                | FLT-M2-20W-C4580       | FLT-M2-20W-F4580 |
|--------------------------------------|------------------------|------------------|
| AC Input                             | 100 ~ 240Vac           |                  |
| System Power                         | 20 W ± 2 W             |                  |
| LED Driving Current                  | 700 mA                 |                  |
| Number of LEDs                       | 8 pcs Osram LED        |                  |
| Luminous Flux ( Hot Lumen )          | 1,100 lm               | 1,020 lm         |
| Luminous Efficacy                    | 55 lm/W                | 51 lm/W          |
| Light Color                          | Cool White             | Warm White       |
| Correlated Color Temperature ( CCT ) | 6000K ~ 7000K          | 2850K ~ 3250K    |
| Beam Angle                           | 80°                    |                  |
| Operating Temperature                | -30 ~ +50° C           |                  |
| Storage Temperature                  | -30 ~ +90° C           |                  |
| Lifetime (typ.)                      | 50,000 hrs at Ta 25° C |                  |
| Heatsink Material                    | Aluminium Extrusion    |                  |
| Luminaire Cover Material             | Clear PC               |                  |
| LED Lumen Maintenance                | LM80                   |                  |
| Casing Color                         | Black                  |                  |
| Size (L) X (W) x (H)                 | 148mm x 164mm X 68mm   |                  |
| IP rating                            | IP66                   |                  |
| Electrical Safety                    | Class II               |                  |

## Photometric data :

Luminous Intensity Distribution Curve



Illuminance at a Distance



Product Dimension :



Model Structure Name :

F L T - M 2 S - 2 0 W - C 4 5 8 0

Product Name :

Flood light

Product Series :

Mini 2 with lens

System Power :

( 22 - 22 Watts )

Color :

( C - Cool White ; F - Warm White )

Optic :

( 4580 - 45 x 80 degree )