

FLT-M70



FLTmini 70 Watts

FLT mini 70 watts with 3030 LEDs offer optimum visual conditions while enabling maximum energy savings

Benefits

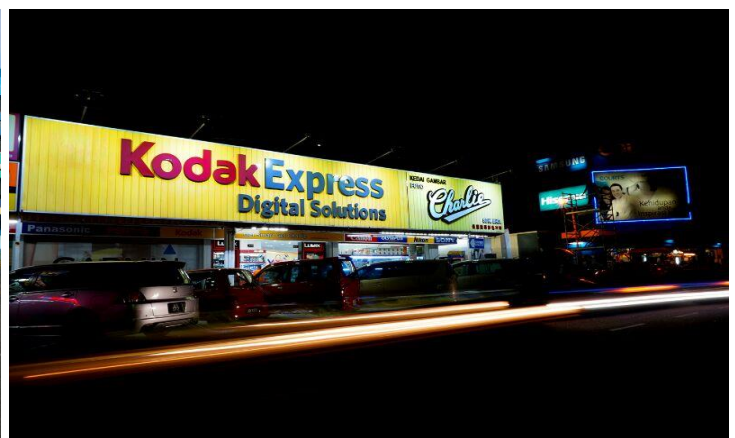
- Better visibility at night
- Easy installation
- Long useful life-span
- Minimum maintenance

Features

- Adjustable light module
- Small and compact
- Available in various colours

Application

- Building
- Compound
- Billboards
- Residential compound lighting

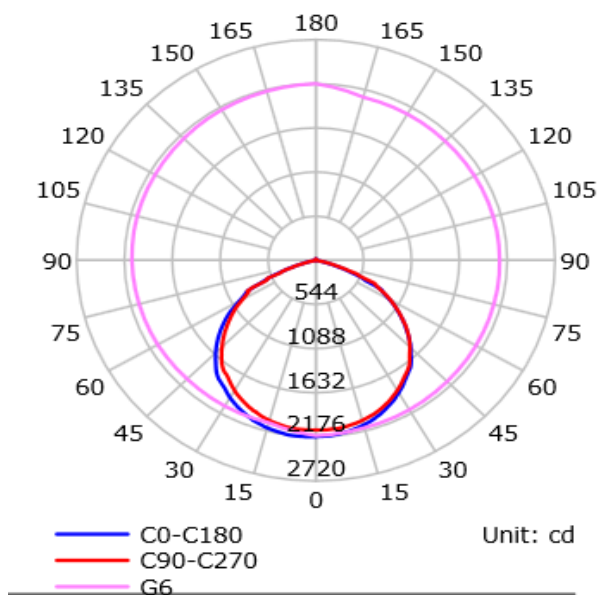


Technical Specifications :

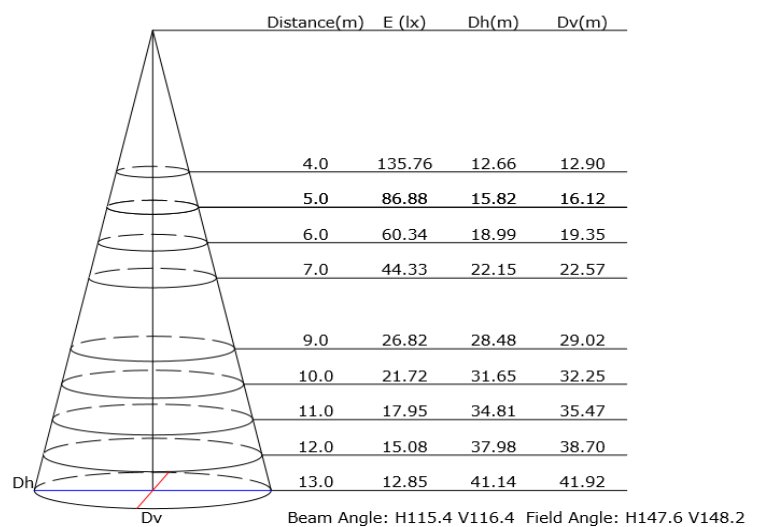
Model	FLT-M2-70W-C12	FLT-M2-70W-F12
AC Input	100 ~ 240Vac	
System Power	70 W +5 /- 10 W	
LED Driving Current	1,400 mA (700 mA each LED)	
Number of LEDs	98 pcs 3030 LED	
Luminous Flux (Hot Lumen)	6,000 lm	5,800 lm
Luminous Efficacy	98 lm/W	96 lm/W
Light Color	Cool White	Warm White
Correlated Color Temperature (CCT)	6000K ~ 7000K	2850K ~ 3250K
Beam Angle	120°	
Operating Temperature	-30 ~ +50° C	
Storage Temperature	-30 ~ +90° C	
Lifetime (typ.)	50,000 hrs at Ta 25° C	
Heatsink Material	Aluminium Extrusion	
Luminaire Cover Material	Clear PC	
LED Lumen Maintenance	LM80	
Casing Color	Black	
Size (L) X (W) x (H)	300mm x 219mm X 85mm	
IP rating	IP66	
Electrical Safety	Class II	

Photometric data :

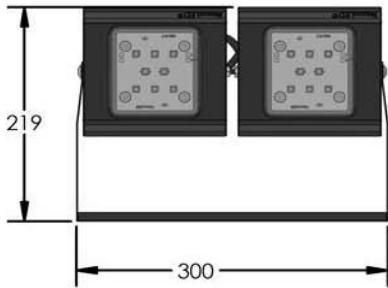
Luminous Intensity Distribution Curve



Illuminance at a Distance



Product Dimension :



Model Structure Name :

