

FLT mini



FLT M35

FLT M35 with 3030 Lumileds LEDs offer optimum visual conditions while enabling maximum energy savings

Benefits

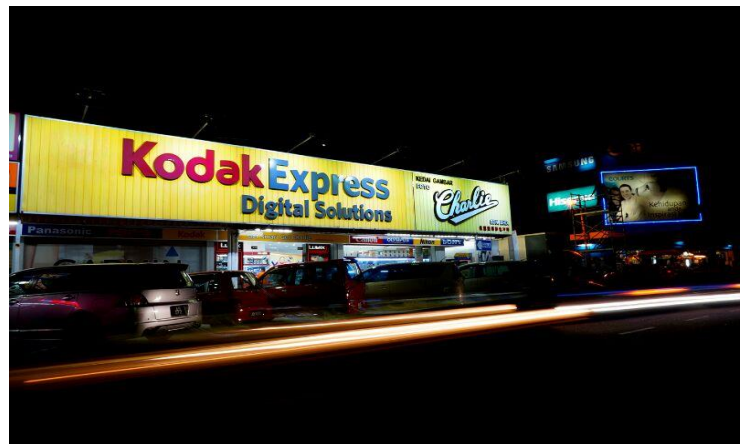
- Better visibility at night
- Easy installation
- Long life-span
- Minimum maintenance

Features

- Adjustable bracket
- Small and Compact
- Available in various colours

Application

- Compound Lighting
- Advertisement & Billboard Lighting
- Residential Compound Lighting

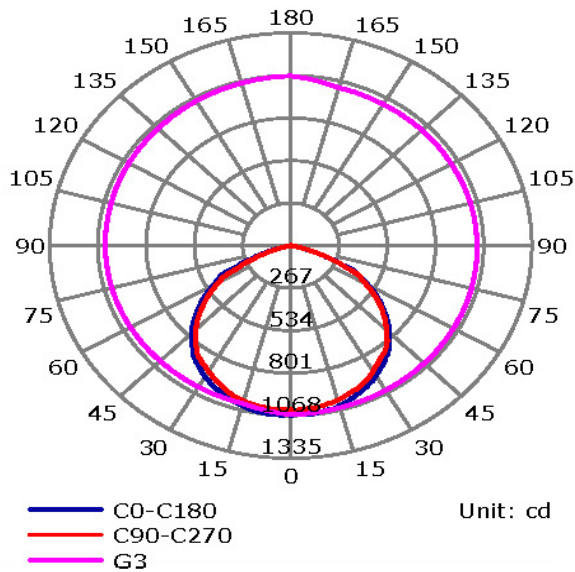


Technical Specifications :

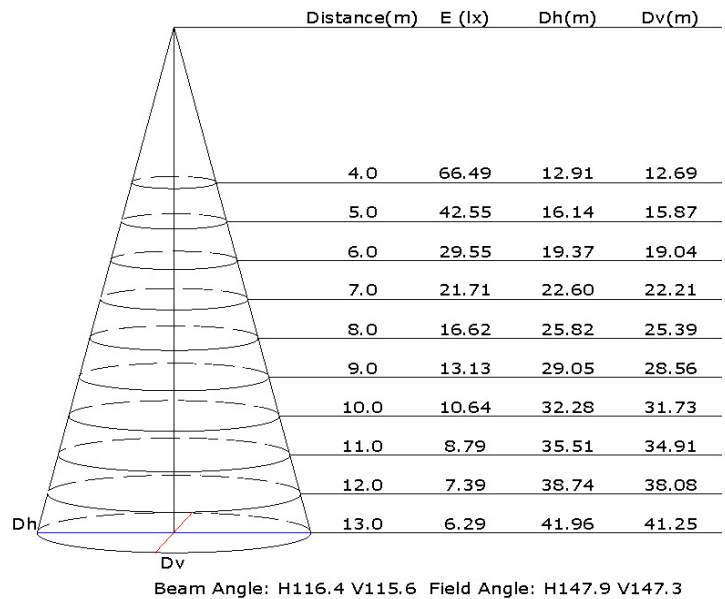
Model	FLT-M2-35W-C12	FLT-M2-35W-F12
AC Input	100 ~ 240Vac	
System Power	35 W +/- 5 W	
LED Driving Current	700mA	
Number of LEDs	49 pcs 3030 LED	
Luminous Flux (Hot Lumen)	2960 lm	2760 lm
Luminous Efficacy	94 lm/W	89 lm/W
Light Color	Cool White	Warm White
Correlated Color Temperature (CCT)	6000K ~ 7000K	2850K ~ 3250K
Beam Angle	120°	
Operating Temperature	-30 ~ +50° C	
Storage Temperature	-30 ~ +90° C	
Lifetime (typ.)	50,000 hrs at Ta 25° C	
Heatsink Material	Aluminium Extrusion	
Luminaire Cover Material	Clear PC	
LED Lumen Maintenance	LM80	
Casing Color	Black	
Size (L) X (W) x (H)	148mm x 164mm X 68mm	
IP rating	IP66	
Electrical Safety	Class II	

Photometric data :

Luminous Intensity Distribution Curve



Illuminance at a Distance



Product Dimension :



Model Structure Name :

F L T - M 2 - 3 5 W - C 1 2

Product Name :

Flood light

Product Series :

Mini 2

System Power :

(35W - 35 Watts)

Color :

(C - Cool White ; F - Warm White)

Optic :

(12 - 120 degree)